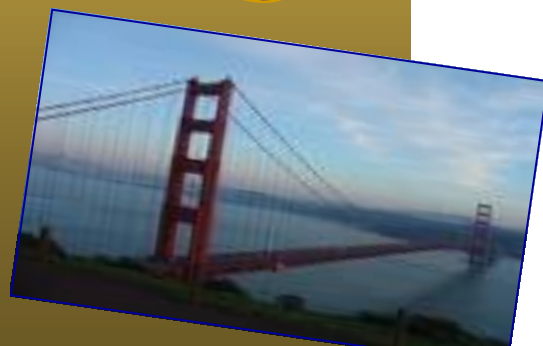


**Make plans NOW to join us...
May 16-June 13, 2012!**

From the Atlantic to the Pacific

Tour
Director,
Ingrid Long
Driver,
Don Myrick



Interested in joining us on the
'Atlantic to the Pacific' Tour?

We have finally responded to your requests and decided to do this tour from the Atlantic to the Pacific again! This preliminary flyer in no way does justice to the 29 days we will spend seeing our United States! Just imagine the different landscapes we will see...mountains, plains, rivers, oceans and everything in between! We will be using, as always, upscale properties at many of our destinations and will include many breakfasts as well as several additional lunches/dinners. To answer a few of your concerns about taking a tour of this length...most of our mornings will start at 8:30 am; we will spend 2-3 nights in the same hotel as many times as possible; and we will take breaks when traveling every 2 to 2 1/2 hours. We will also schedule some free time in each of our 2-3 nights stays and will stay in some hotels/motels that have washing machines and dryers available. Because of the length of this tour, we will limit the number of folks who join us on this tour to 23, so there will be plenty of room on the coach to 'spread out.'

Thanks, Ingrid

You have been asking us to 'do' the Pacific Coast again...so here it is!! In addition, we are going to include many of the states you may have missed in all your travels!

Our travel itinerary will include Iowa, Minnesota, North Dakota, Montana, Idaho, Washington, Oregon, California, Nevada, Utah, Wyoming, Nebraska, Kansas...plus 7 states in route! Enjoy a relaxed schedule—2 nights/Seattle, 3 nights/San Francisco, 2 nights/Los Angeles, 2 nights/Las Vegas, 2 nights/Salt Lake City and 2 nights/Branson. Highlights include the Giant Redwoods, San Francisco, Napa & Sonoma Valleys, Monterey, Solvang, the California coast, Hearst Castle, etc. "Must do's" also include Hollywood, Las Vegas, Bryce and Zion Canyons, Salt Lake City, Temple Square, and Cheyenne, WY. We will return home through Nebraska and Missouri, spending 2 nights in Branson, MO and our last night in Nashville, TN! This will be an amazing journey to the Pacific Ocean and back again...with unforgettable sights throughout!

Carolina Tours, LLC
455 Long's Pond Road Lexington, SC 29073
Phone: 803-356-3000 or Toll-free
1-888-74TOURS
Fax: 803-359-2715
Email: CaroTours@aol.com

From the Atlantic

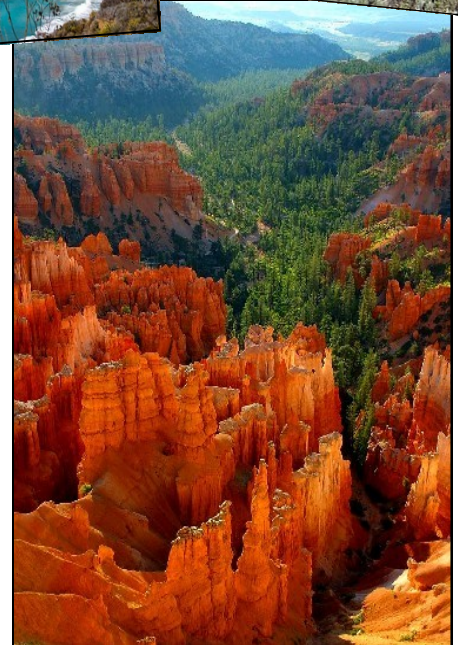
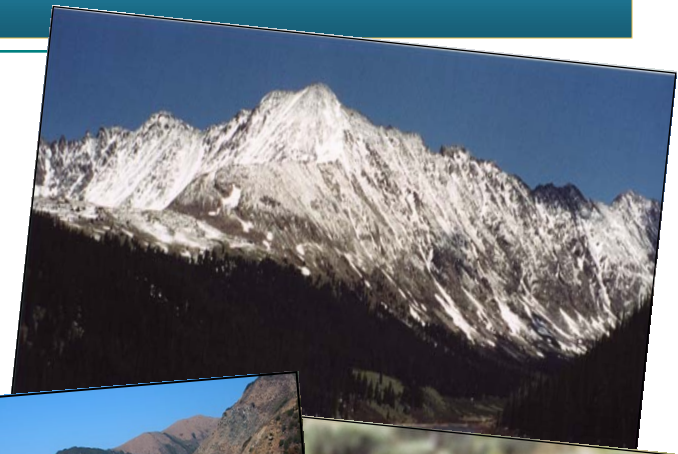
THESE PICTURES TELL YOU ALL YOU NEED TO KNOW!!

The highlight of the days we spend traveling to and from the Pacific coast is the drive itself...as we make our way from one destination to the next. Aboard our new motor coach, we will travel along the most spectacular highways on the North American continent, commanding panoramic views of majestic mountains, waterfalls, prairies, lakes and wildflowers. In route we may see moose, deer, bighorn sheep, mountain goats, bear, and even a furtive coyote! There will be many photo stops along the way...and, of course, *we will travel through all those states you may have missed during your travels.*



PRELIMINARY ROUTE FROM THE ATLANTIC TO THE PACIFIC, AND BACK!

- Day 1 Travel from Columbia to Paducah, KY, 9 driving hours
- Day 2 Travel to Cedar Rapids, Iowa, 7 driving hours
- Day 3 Travel to St. Cloud, Minnesota, 6 driving hours
- Day 4 Travel to Bismarck, ND, 5 1/2 driving hours
- Day 5 Travel to Billings, MT, 6 driving hours
- Day 6 Travel to Missoula, MT, 5 driving hours
- Day 7 Travel to Seattle, WA, 7 hours
- Day 8 *2nd night in Seattle, WA*
- Day 9 Travel to Portland, OR, 3 hours
- Day 10 Travel to Gold Beach, OR, 5 3/4 driving hours
- Day 11 Travel to Sonoma, CA, 6 1/2 driving hours
- Day 12 Travel to San Francisco, CA, 1 driving hour
- Day 13 *2nd night in San Francisco, CA*
- Day 14 *3rd night in San Francisco, CA*
- Day 15 Travel to Monterey, CA, 2 driving hours
- Day 16 Travel to Solvang, CA, 3 driving hours
- Day 17 Travel to Los Angeles, CA, 2 1/4 driving hours
- Day 18 *2nd night in Los Angeles, CA*
- Day 19 Travel to Las Vegas, NV, 4 1/2 driving hours
- Day 20 *2nd night in Las Vegas, NV*
- Day 21 Travel to Bryce Canyon (doing Zion first), UT, 4 1/2 driving hours
- Day 22 Travel to Salt Lake City, UT, 5 driving hours
- Day 23 *2nd night in Salt Lake City, UT*
- Day 24 Travel to Cheyenne, 6 1/2 driving hours
- Day 25 Travel to Lincoln, NE, 6 1/2 driving hours
- Day 26 Travel to Branson, MO, 8 1/2 driving hours
- Day 27 *2nd night in Branson, MO*
- Day 28 Travel to Nashville, TN, 8 1/2 driving hours
- Day 29 Travel to Columbia, 7 1/2 driving hours
Travel to Summerville, 9 driving hours



To the Pacific



SOME CITIES WE'LL SEE...

to name just a few!!

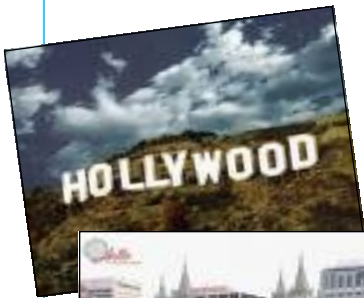
Knoxville, TN
 Nashville, TN
 Paducah, KY
 Indianapolis, IN
 St. Louis, MO



Springfield, IL
 Peoria, IL
 Cedar Rapids, IA
 Minneapolis, MN
 Fargo, ND
 Bismarck, ND



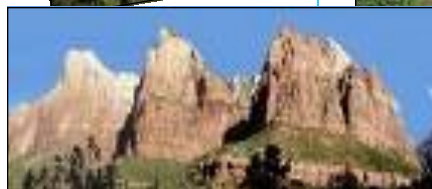
Billings, MT
 Bozeman, MT
 Butte, MT
 Kellogg, ID
 Seattle, WA
 Portland, OR
 Gold Beach, OR
 Eureka, CA
 Sausalito, CA
 Sonoma, CA
 San Francisco, CA
 San Jose, CA



Santa Cruz, CA
 Monterey, CA
 San Simeon, CA

Solvang, CA
 Carmel-by-the-Sea, CA
 San Luis Obispo, CA
 Los Angeles, CA
 Las Vegas, NV
 Salt Lake City, UT
 Laramie, WY
 Cheyenne, WY
 Lincoln, NE
 Kansas City, MO
 Branson, MO

PLUS MANY, MANY MORE!!



THE SCENIC DRIVES...

Smoky Mountains
 Land Between the Lakes
 Mississippi River
 Missouri River
 North Dakota Badlands
 Theodore Roosevelt National Park
 Rocky Mountains
 National Bison Range, Flathead Lake
 Bitterroot Mountain Range
 Olympic Mountains
 Columbia River and Gorge
 Cascade Mountains
 Mt. Ranier
 Olympic Mountains
 Multnomah Falls
 Hood River and Mt. Hood
 Willamette Valley
 Oregon's Coast Mountains
 Avenue of the Giants
 Redwood National Forest
 Rogue River
 Napa Valley & Sonoma
 Santa Cruz Mountains
 17 Mile Drive, (coach traffic permitting)
 the Pacific Coastline
 Monterey Peninsula
 Zion Canyon
 Bryce Canyon
 Mt. Carmel Highway
 Route 66
 Pebble Beach
 Ozark Mountains



From the Atlantic To the Pacific

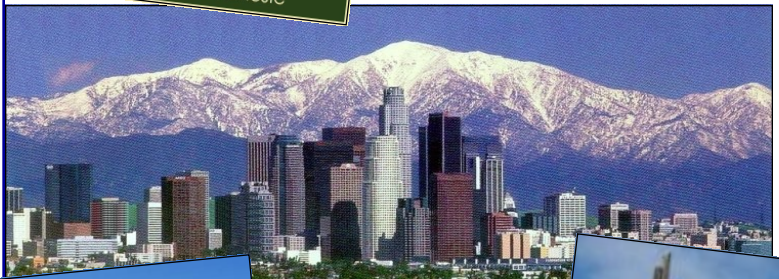
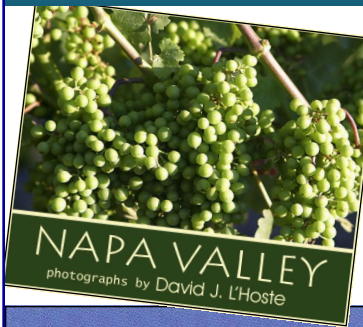
No flyer can do justice to this tour...some things just have to be taken on faith! Please know that we include all the components that make our tours special...2 nights in as many of our destinations as possible, upscale accommodations, dining 'experiences', approximately 30 meals (12 dinners/lunches, 18 breakfasts, and 3 manager receptions included!), guides throughout the tour, fascinating sights, many, many inclusions/admissions...and, as always, "something special!" This is one tour you will never forget!



THESE ARE JUST SOME OF THE ADMISSIONS/TOURS!

- John Deere Factory Tour
- Little Brown Church in the Vale
- Little Big Horn Battlefield National Monument
- USFS Smoke Jumper & Aerial Fire Depot VC
- Sierra Silver/Wallace area
- Old Sacred Heart Mission, Kellogg
- Pike's Place Farmer's Market
- Seattle's Space Needle
- Oregon State Capitol
- Bonneville Dam & Visitor's Center
- Dune buggy ride, National Dunes Recreation Area
- Coos Bay
- Redwood National Park
- Sonoma & Napa Valley Wineries
- COPIA
- Golden Gate Bridge
- Chinatown, Cliff House
- Seal Rock, Fisherman's Wharf
- Cannery Row
- Salinas Valley
- Carmel by the Sea
- Hearst Castle
- Ronald Reagan Library & Museum
- Hollywood
- Mann's Chinese Theatre, Rodeo Drive
- Calico Ghost Town
- Las Vegas' Fremont Street Experience
- Temple Square
- Mormon Tabernacle
- Utah State Capitol
- Great Platte River Road Archway Monument
- Lambert's Throed Rolls
- 2 Branson shows

Some of these are 'drivebys' included as part of a tour, but most 'sights' are stops with admission included, as needed.



Cost

\$5599 pp/double \$5190 pp/triple
 \$4880 pp/quad \$7720 Single

DEPOSIT:

\$500 DUE ASAP

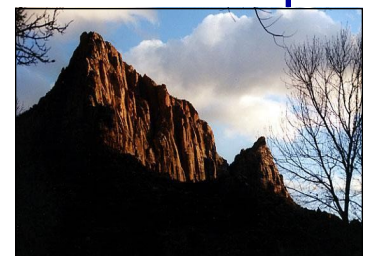
2ND DEPOSIT:

\$1000 due Dec. 1

BALANCE DUE:

March 1.

We strongly recommend insurance for this tour.



Remember, "Expect something special when you travel with Carolina Tours!"